



# Discover Rutland *Venue Guide*



	Page
<b>Venues at a glance</b>	<b>2</b>
<b>Map</b>	<b>3</b>
<b>Group Activities</b>	<b>5</b>
<b>Accommodation</b>	<b>9</b>
<b>Garden Centres</b>	<b>10</b>
 <b>Featured Venues</b>	
<i>Barnsdale Gardens</i>	<i>11</i>
<i>Barnsdale Lodge</i>	<i>12</i>
<i>Belvoir Castle</i>	<i>13</i>
<i>Burghley House</i>	<i>14</i>
<i>Deene Park</i>	<i>15</i>
<i>Gates Garden Centre</i>	<i>16</i>
<i>Greetham Valley</i>	<i>18</i>
<i>Hambleton Hall</i>	<i>19</i>
<i>Normanton Church</i>	<i>20</i>
<i>Oakham Castle</i>	<i>21</i>
<i>Rockingham Castle</i>	<i>22</i>
<i>Rutland Hall Hotel &amp; Spa</i>	<i>23</i>
<i>Rutland Showground</i>	<i>24</i>
<i>Rutland Water Golf Course</i>	<i>25</i>
<i>Rutland Water Nature Reserve</i>	<i>26</i>
<i>Spanhoe Lodge</i>	<i>27</i>
<i>The Dairy Barn Café</i>	<i>28</i>
<i>The Falcon Hotel</i>	<i>30</i>
<i>The Olive Branch</i>	<i>31</i>
<i>The Victoria Hall</i>	<i>32</i>
<i>Tresillian Guest House</i>	<i>33</i>
<i>Wisteria Hotel</i>	<i>34</i>

Venue	Page	Max party size	Max meeting size	Map no.
Barnsdale Gardens	11	70	15	1
Barnsdale Lodge	12	200	60	2
Belvoir Castle	13	120	60	3
Burghley House	14	160	60	4
Deene Park	15	Site hire options	N/A	5
Gates Garden Centre	16	120	70	6
Greetham Valley	18	300	120	7
Hambleton Hall	19	40	40	8
Normanton Church	20	102	N/A	9
Oakham Castle	21	80	N/A	10
Rockingham Castle	22	90	60	11
Rutland Hall Hotel & Spa	23	450	250	12
Rutland Showground	24	Site hire options	150	13
Rutland Water Golf Course	25	180	40	14
Rutland Water Nature Reserve	26	N/A	60	15
Spanhoe Lodge	27	42	42	16
The Dairy Barn Café	28	25	18	17
The Falcon Hotel	30	120	120	18
The Olive Branch	31	30	16	19
The Victoria Hall	32	200	200	20
Tresillian Guest House	33	N/A	24	21
Wisteria Hotel	34	70	63	22



- |                       |                              |                                 |
|-----------------------|------------------------------|---------------------------------|
| 1 Barnsdale Gardens   | 8 Hambleton Hall             | 15 Rutland Water Nature Reserve |
| 2 Barnsdale Lodge     | 9 Normanton Church           | 16 Spanhoe Lodge                |
| 3 Belvoir Castle      | 10 Oakham Castle             | 17 The Dairy Barn Café          |
| 4 Burghley House      | 11 Rockingham Castle         | 18 The Falcon Hotel             |
| 5 Deene Park          | 12 Rutland Hall Hotel & Spa  | 19 The Olive Branch             |
| 6 Gates Garden Centre | 13 Rutland Showground        | 20 The Victoria Hall            |
| 7 Greetham Valley     | 14 Rutland Water Golf Course | 21 Tresillian Guest House       |
|                       |                              | 22 Wisteria Hotel               |

# Discover Rutland

## Group Activities

Many activities are available to suit your group needs, here is some inspiration for your own Rutland itinerary.



## The Rutland Vineyard Tour

[info@therutlandvineyard.com](mailto:info@therutlandvineyard.com)

Enjoy a tour of The Rutland Vineyard, the only UK vineyard to have a Master of Wine conducting the tour! After a walk among the vines, enter the tasting barn to try some wines hosted by their very own resident Master of Wine, John Atkinson. They can host 15-25 people per tour.

## The Great Grainstore Brewery Tour

[info@grainstorebrewery.com](mailto:info@grainstorebrewery.com)

Your day starts with a welcome on arrival from your tour host, followed by the guided tour, lasting approximately one to one and a quarter hours and takes you through the brewing process of Grainstore Beers.



## Hoggy's Grill

[sarah@hoggysgrill.com](mailto:sarah@hoggysgrill.com)

Join Matthew Hoggard at his grill school, teaching all there is to know about BBQing, whilst being entertained by your host! Their courses require a minimum of 8 attendees, with their Ultimate Burger Class having a maximum capacity of 16 and their Basic & Gourmet classes having a maximum capacity of 12.



## Tolethorpe Hall

[admin@tolethorpe.co.uk](mailto:admin@tolethorpe.co.uk)

Enjoy a picnic in the beautiful grounds, then take your seat in the 600-seat covered auditorium, protected from summer showers, and see an open-air stage like no other with amateur productions from the extremely talented Stamford Shakespeare Company.



## Rutland County Museum

[museum@rutland.gov.uk](mailto:museum@rutland.gov.uk)

Rutland County Museum contains exhibitions of archaeology, and rural and social life. The museum hosts an exciting programme of events including Cinema for Rutland, an initiative organised by Arts for Rutland. Screenings take place on the first Thursday and the third Friday of every month.



# Discover Rutland

## Group Activities



## Barnsdale Gardens

[info@barnsdalegardens.co.uk](mailto:info@barnsdalegardens.co.uk) | See page 11

Barnsdale is home to 38 themed garden 'rooms', full of inspiration for garden-lovers of all ages. Watch hundreds of birds on feeders throughout the site or enjoy a slap-up lunch or afternoon tea out on the lawn.

## Burghley House

[burghley@burghley.co.uk](mailto:burghley@burghley.co.uk) | See page 14

Burghley is one of the grandest houses of the first Elizabethan Age. Visitor facilities include the Orangery Restaurant, Gift Shop, Garden of Surprises and beautiful walks around the parkland. All group tour bookings require a minimum number of 15 guests.



## Rockingham Castle

[estateoffice@rockinghamcastle.com](mailto:estateoffice@rockinghamcastle.com) | See page 22

Rockingham Castle's ancient rooms and stunning grounds provide the perfect setting for a whole range of corporate and private events. Take a tour of the Castle then explore the formal gardens. Options are available for larger groups with a minimum of 20 people.

## Belvoir Castle

[reception@belvoircastle.com](mailto:reception@belvoircastle.com) | See page 13

Belvoir Castle is the ancestral home of the Duke of Rutland. The castle is open to the public for certain days throughout the year. There are many walks through the formal gardens on the castle terrace and into the woodland. Groups of 10 or more that pre-book will receive a reduced group rate.



## Oakham Castle

[castle@rutland.gov.uk](mailto:castle@rutland.gov.uk)

Oakham Castle is one of the oldest surviving aisled stone halls in the country. Inside the Castle you can see 240 presentation horseshoes hanging on the walls. The Castle is a popular place for Civil Weddings, meetings and special events. Admission is free and there is also a cafe on the grounds.

# Discover Rutland

## Group Activities

### Rutland Cycling

[bikesales@rutlandcycling.com](mailto:bikesales@rutlandcycling.com)

Start your Rutland adventure at either Normanton on the South shore, or Whitwell on the North shore, and enjoy Rutland Cycling's extensive range of bikes and accessories for hire and sale. The bike hire fleet is replaced every year with current season models.



### Rutland Watersports

[rutlandwatersports@anglianwater.co.uk](mailto:rutlandwatersports@anglianwater.co.uk)

Rutland Watersports Centre is on the North shore of Rutland Water Park at Whitwell and offers sailing, windsurfing, kayaking, canoeing or stand up paddle boarding, catering for beginners and experts, it makes the perfect team building, stag/hen do or party activity.



### Rutland Belle Water Cruises

[info@rutlandwatercruises.com](mailto:info@rutlandwatercruises.com)

A cruise aboard the Rutland Belle allows you to enjoy the sights of Rutland Water whilst listening to commentary highlighting points of interest. The Rutland Belle can carry up to 110 passengers, with 60 places in the under-cover saloons. Themed cruises are available including afternoon tea, gin and wildlife watching. There is a vehicle drop-off area at the Rutland Belle at The Harbour, and a boarding lift for disabled access.



### Aqua Park Rutland

[customerservices@aquaparkgroup.co.uk](mailto:customerservices@aquaparkgroup.co.uk)

Show off your flips and tricks from the Tornado Tower and explore the course that features climbing walls, trampolines, slides, and some of the biggest blast bags making it the ultimate day out for groups. Wetsuits can be hired or purchased on the day. Buoyancy aids are included.



# Discover Rutland

## Group Activities

### Rutland Water Nature Reserve

This internationally famous nature reserve is managed by the Leicestershire & Rutland Wildlife Trust in partnership with Anglian Water. With two sites, Rutland Water Nature Reserve and Lyndon Visitor Centre, both offer events and workshops. Leicestershire & Rutland Wildlife Trust's Wild Wellbeing Days provide people with beautiful surroundings to have a get together amongst. They also offer a range of courses including dry stone walling, bird ringing and much more! See page 26 for more info.



### Mini golf at Ferneley's

[info@ferneleys.co.uk](mailto:info@ferneleys.co.uk)

Ferneley's Adventure Golf Course is suitable for all weather conditions and has a fun farm theme. The course is made up of 9 holes and takes about 30 minutes to complete a round. There is a £10 booking fee if you wish to prebook a time slot. Also onsite is the café and play areas, plus their renowned ice cream. See page 28 for more info.



### Rutland Water Golf Course

[enquiries@rutlandwatergolfcourse.co.uk](mailto:enquiries@rutlandwatergolfcourse.co.uk)

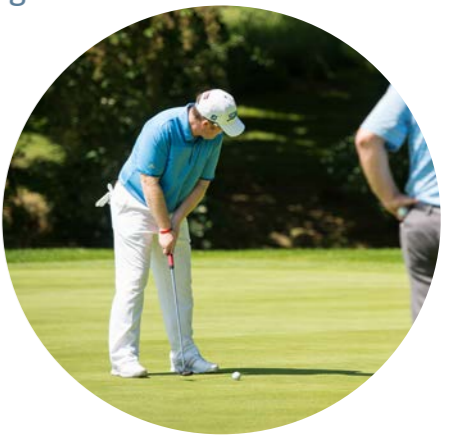
With Panoramic views of Rutland Water you have a choice of the challenging 18 hole Championship Normanton course or nine par 3 holes on the Hambleton course. There is always expert advice available from one of the pros and the pro-shop is fully stocked with all the latest equipment. After your game enjoy the fully licensed bar, cafe & restaurant. See page



### Greetham Valley Golf

[info@greethamvalley.co.uk](mailto:info@greethamvalley.co.uk)

Set amidst 276 acres of picturesque countryside, Greetham Valley has three diverse golf courses, The Lakes, The Valley and the par 3 Academy, each with their own unique challenges for every level of player.



# Discover Rutland

## Hotels

**Rutland Hall Hotel** | 66 bedrooms  
01572 757901 | [events@rutlandhall.co.uk](mailto:events@rutlandhall.co.uk)

**Barnsdale Lodge** | 46 bedrooms  
01572 724678 | [reservations@barnsdalelodge.co.uk](mailto:reservations@barnsdalelodge.co.uk)

**Redwings Lodge** | 40 bedrooms  
01572 748787 | [rutland@redwingslodge.co.uk](mailto:rutland@redwingslodge.co.uk)

**Greetham Valley Hotel** | 35 bedrooms  
01780 460444 | [info@greethamvalley.co.uk](mailto:info@greethamvalley.co.uk)

**The Falcon Hotel** | 25 bedrooms  
01572 823535 | [info@falcon-hotel.co.uk](mailto:info@falcon-hotel.co.uk)

**Wisteria Hotel** | 25 bedrooms  
01572 722844 | [enquiries@wisteriahotel.co.uk](mailto:enquiries@wisteriahotel.co.uk)

**Hambleton Hall** | 17 bedrooms  
01572 756 991 | [hotel@hambletonhall.com](mailto:hotel@hambletonhall.com)

## Self-Catering

**Rutland Retreats** | 17 retreats, maximum occupancy 102

**Rutland Lodges at Greetham Valley** | 8 lodges, maximum occupancy 48

**In the Stix** | 6 glamping domes, maximum occupancy 36

**Broccoli Bottom** | 6 units, maximum occupancy 23

**Stretton Lakes** | 7 lodges, maximum occupancy 20

**Clematis Cottage** | 4 units, maximum occupancy 17

**Rutland Luxury Lodges** | 6 lodges, maximum occupancy 15

**Cottesmore Cottages** | 2 units, maximum occupancy 12

**America Lodge** | 1 unit, maximum occupancy 9

**Fairchild's Barn** | 2 units, maximum occupancy 16

## Accommodation



# Discover Rutland

## Garden Centres

Garden Centres are ideal coach trip destinations, and Rutland has a plethora for you to tour around or choose from, all with excellent plants and additional retail offerings, not forgetting the important refreshment opportunities!



## Gates Garden Centre

[restaurant@gatesgardencentre.co.uk](mailto:restaurant@gatesgardencentre.co.uk) | See more on page 16.

With over 12,500 square metres of indoor and outdoor displays, a day at Gates is time well spent. Better yet, the Garden Restaurant seats up to 360 people, with an outdoor veranda overlooking their lakes or if you just fancy a coffee, the Courtyard Coffee Shop seats 120 people.

## Rutland Garden Village

[info@rutlandgardenvillage.co.uk](mailto:info@rutlandgardenvillage.co.uk)

With their newly renovated Cakery & Radish Restaurant, Rutland Garden Village provides the perfect relaxed locations for a small or large gathering with outdoor and indoor seating available. Radish is open for you to enjoy a hot meal, including gorgeous breakfast/brunch platter boards, a delicious selection of summer salads and much more! Other retail units are also onsite alongside a children's play area.



## Rutland Nursery & Café

[info@rutlandnursery.co.uk](mailto:info@rutlandnursery.co.uk)

The newly extended site provides views of Rutland Water, and the café is the perfect location for a gathering, nestled amongst the trees and plants. Indoor and outdoor seating is available and their extensive menu covers breakfast and lunch meaning whenever your meeting takes place, there is plenty of food on offer.

## Welland Vale Garden Centre

[theorchard@wellandvale.co.uk](mailto:theorchard@wellandvale.co.uk)

The Orchard Café at Welland Vale Garden Centre provides a relaxed location to hold a meeting or gathering. The menus offer a range of food and light snacks made using award-winning locally sourced produce.



# Barnsdale Gardens



Barnsdale Gardens, The Avenue, Exton,  
Oakham, Rutland LE15 8AH

01572 813 200

info@barnsdalegardens.co.uk

www.barnsdalegardens.co.uk

Miles from Oakham train station: **4.6**  
Miles from Stamford train station: **10**  
Miles from Peterborough train station: **23**

Number of conference rooms: **1**

Licensed for weddings: **Yes**

Disabled toilets: **Yes**

Ramp/lift: **Yes**

Disabled access: **Yes**

Barnsdale Gardens is an ideal setting for private functions of all kinds. From corporate events and entertainment to private parties and more, their facilities can be adapted to suit your individual requirements. There is a small conference room which fits around 15 people and can be hired for the day, refreshments and Wi-Fi are also available.

For those planning their wedding, the Wedding Arbour is open all year round. A maximum of around 70 guests is advised for everyone to get a view.

Perfect for  
weddings!

# Barnsdale Lodge



The Avenue, Exton, Oakham, Rutland,  
LE15 8AH

01572 724678

reservations@barnsdalelodge.co.uk

www.barnsdalelodge.co.uk

Miles from Oakham train station: **3.7**  
Miles from Stamford train station: **8.1**  
Miles from Peterborough train station: **25**

Number of conference rooms: **6**

Licensed for weddings: **Yes**

Disabled toilets: **Yes**

Ramp/lift: **Ramp at front entrance  
and between entrance and restaurant.**

Disabled access: **Yes**



Whether you're staying the night, visiting for a meeting in one of the conferencing suites, or attending one of the spectacular events, Barnsdale Lodge's professional service and informal atmosphere will help you to feel at ease right away.

With plentiful outside space, comfortable bedrooms, top-notch dining and a vast amount of free parking, Barnsdale Lodge are located seven miles west of the A1, a 15-minute taxi ride from Stamford train station.

Capacity	Theatre	U-Shaped	Cabaret	Boardroom	Banqueting	Standing	Dining
The Barn	200	15	150	60	150		150
The Rigate Suite	40	25	40	28	40		40
The Rutland Room	24			16			
The Fort Henry Suite	10			6			
Cottage				20			22
The Pheasant							10

Belvoir Castle



Belvoir Castle, Grantham, Leicestershire,  
NG32 1PE

01476 871 00

reception@belvoircastle.com

www.belvoircastle.com

Miles from Oakham train station: **18.5**  
Miles from Stamford train station: **27.4**  
Miles from Peterborough train station: **40.2**

Licensed for weddings: **Yes**

Disabled toilets: **Yes**

Ramp/lift: **No**

Disabled access: **Partial**

Whether your heart is set on a formal ball for up to 120 guests or an intimate weekend gathering, a landmark birthday or significant anniversary, you'll find Belvoir Castle's events team knowledgeable and committed to making sure you have an amazing time.



Burghley House



Burghley House, Stamford, Lincolnshire,  
PE9 3JY

01780 752 451

burghley@burghley.co.uk

www.burghley.co.uk

Miles from Oakham train station: **14.2**  
Miles from Stamford train station: **1.5**  
Miles from Peterborough train station: **14.7**

Number of conference rooms: **4**

Licensed for weddings: **Yes**

Disabled toilets: **Yes**

Ramp/lift: **Yes**

Disabled access: **Partial**

Capacity	Theatre	Standing	Banqueting	Cabaret	Boardroom	Teambuilding
Great Hall	130	160	110	60	42	
Orangery	70	160	70	35	28	
Cheke Room	60			30	24	
Ascham Room	30			15	16	
South Lawn						Groups from 20 - 160

Every occasion can be tailored to suit individual requirements, promising a completely unique event each and every time. Burghley is ideally located in a unique setting amidst 13,000 acres of rolling parkland and is positioned just off the A1, giving easy road access from the north and south. Less than a mile from the beautiful and historic market town of Stamford, with straightforward rail links to Peterborough, Leicester, Birmingham and Stansted Airport, Burghley is perfectly located for guests whether local or further afield.

Deene Park



Deene, Corby NN17 3EG

01780 450278

info@deenepark.com

www.deenepark.com

Miles from Oakham train station: **15.8**  
Miles from Stamford train station: **11.2**  
Miles from Peterborough train station: **20.2**

Licensed for weddings: **Yes**

Disabled toilets: **Yes**

Ramp/lift: **No**

Disabled access: **Partial**

Deene Park is a fabulous venue for those looking to leave a lasting impression on colleagues, clients and employees; the beautiful parkland setting is the ideal backdrop for corporate events or weddings.

Perfect for  
weddings!

Gates Garden Centre



Somerby Rd, Cold Overton,  
Oakham LE15 7QB

01664 452837

restaurant@gatesgardencentre.co.uk

www.gatesgardencentre.co.uk

Miles from Oakham train station: **4**  
Miles from Stamford train station: **16.7**  
Miles from Peterborough train station: **30**  
Number of conference rooms: **3**

Licensed for weddings: **No**

Disabled toilets: **Yes**

Ramp/lift: **Yes**

Disabled access: **Yes**

Whether you are planning a family brunch, celebratory lunch with friends, an afternoon tea hen party or a business meeting or training event, Gates Garden Centre have the perfect space and can create a bespoke package designed just for you.

Whatever your event, they have a range of spaces available and can offer several catering options, including breakfast, coffee and cake, a light lunch, hot and cold buffet, afternoon tea or a three-course bespoke menu – the choice is yours. Rooms can be decorated to suit your occasion, including flowers and balloons to co-ordinate with your colour scheme, or why not order a personalised cake to celebrate in style.

Vellum Room	20 delegates
Thornton Suite	70 delegates
Courtyard Coffee Shop	120 delegates



## Greetham Valley



Greetham Valley, Wood Lane, Greetham,  
Oakham, Rutland, LE15 7SN

01780 460444

info@greethamvalley.co.uk

www.greethamvalley.co.uk

Miles from Oakham train station: 8  
Miles from Stamford train station: 10.5  
Miles from Peterborough train station: 23  
Number of conference rooms: 5

Licensed for weddings: **Yes**

Disabled toilets: **Yes**

Ramp/lift: **Yes**

Disabled access: **Yes**



Whether you're looking for an informal space for a small business meeting or a large conference venue for up to 300 delegates, Greetham Valley is a leading corporate venue in Rutland. Greetham Valley is also just a short distance from the A1, making it easily accessible. Greetham is also the ideal venue to host balls, weddings, and special occasions.

Stamford Conference Room	25 delegates
Uppingham Conference Room	25 delegates
Oakham Conference Room	25 delegates

Capacity	Theatre	Cabaret	Boardroom
Lakeview Suite	80		35
Rutland Suite	300	120	

Hambleton Hall



Hambleton, Oakham, Rutland, LE15 8TH

01572 756 991

hotel@hambletonhall.com

www.hambletonhall.com

Miles from Oakham train station: **3.5**  
Miles from Stamford train station: **12.2**  
Miles from Peterborough train station: **25.7**

Number of conference rooms: **3**

Licensed for weddings: **Yes**

Disabled toilets: **No**

Ramp/lift: **Portable ramp to access building, internal lift to access bedrooms**

Disabled access: **Partial**



Hambleton Hall is a popular choice for business and social events. Business events could encompass small meetings, board meetings, conferences, sales incentives; social events could include birthdays, engagements, anniversaries, and parties. Whatever your requirement, you can be sure of excellent service from Hambleton Hall.

Capacity	Theatre	Boardroom
Private Room	25	16
Main Restaurant	40	20
Study	10	10

Normanton Church



Normanton Park Rd, Oakham LE15 8HD

01780 686800

weddings@anglianwater.co.uk

www.anglianwaterparks.co.uk/rutland-water-park/weddings

Miles from Oakham train station: **7.3**  
Miles from Stamford train station: **7.1**  
Miles from Peterborough train station: **20.4**

Number of conference rooms: **1**

Licensed for weddings: **Yes**

Disabled toilets: **No**

Ramp/lift: **Yes**

Disabled access: **Yes**

Normanton Church, set on the south shore of Rutland Water is a unique setting, perfect for intimate civil ceremonies.

Providing the entire wedding package, the church is surrounded by stunning views giving endless opportunities for beautiful photographs alongside the option to position a marquee within the park to hold your wedding reception, which provides stunning views of Rutland Water. As the evening draws in, Normanton Church can be illuminated for you to truly impress your guests as they dance the night away alongside you.



## Oakham Castle



Castle Grounds Market Place, Oakham LE15 6DR

01572 757578

castle@rutland.gov.uk

www.oakhamcastle.org

Miles from Oakham train station: **0.5**

Miles from Stamford train station: **11.4**

Miles from Peterborough train station: **24.7**

Number of conference rooms: **1**

Licensed for weddings: **Yes**

Disabled toilets: **Yes**

Ramp/lift: **No**

Disabled access: **Yes**

*Perfect for  
weddings!*

The Great Hall of Oakham Castle is a beautiful and dramatic setting for your perfect wedding

From intimate wedding breakfasts, to magnificent receptions, your wedding at Oakham Castle will be the most magical and memorable day. Catering by the popular Castle Cottage Café.

## Rockingham Castle



Rockingham Castle's ancient rooms and stunning grounds provide the perfect setting for a whole range of corporate and private events, all year round.

The Castle's intimate areas are ideal for smaller groups, the spacious rooms are superb for larger parties and the green spaces and peaceful gardens are excellent for outside events. All can be booked with exclusive use and hospitality.

Rockingham Castle,  
Rockingham, LE16 8TH

01536770240

estateoffice@rockinghamcastle.com

www.rockinghamcastle.com

Miles from Oakham train station: **12.7**

Miles from Stamford train station: **18**

Miles from Peterborough train station: **27**

Number of conference rooms: **4**

Licensed for weddings: **Yes**

Disabled toilets: **Yes**

Ramp/lift: **Ramps**

Disabled access: **Partial**

	Capacity
The Great Hall	90
The Panel Room	60
Walkers House	45
The Lewis Room	Smaller gatherings

*Perfect  
for larger  
parties!*

# Rutland Hall Hotel & Spa



Perfect for  
weddings!



Rutland Hall Hotel, Stamford Road Nr  
Oakham, Rutland, LE15 8AB

01572 757901

events@rutlandhall.co.uk

www.rutlandhall.co.uk

Miles from Oakham train station: **4**  
Miles from Stamford train station: **8.4**  
Miles from Peterborough train station: **22**

Number of conference rooms: **6**

Licensed for weddings: **Yes**

Disabled toilets: **Yes**

Ramp/lift: **Part**

Disabled access: **Partial**

Capacity	Maximum Capacity
Lakeview Suite	250
Lakeview Bar & Lounge	120
Oak	30
Hazel	14
Apple	28
Cherry	14
Pavillion	450
Outdoor Ceremony	250

Ideal for gatherings, Rutland Hall brings people together, whether for conferences, weddings, meetings, away days, celebrations, or retreats. Our expert team will ensure you are looked after from the moment you first step over the threshold.

Rutland Hall Hotel & Spa is a luxury country retreat situated on the shores of Rutland Water. Nestled within 65 acres of landscaped gardens and parkland, it offers a welcoming, memorable, and romantic place to dine, relax or celebrate.

Rutland Hall offers the perfect back drop for any occasion and is a leading wedding venue in the Midlands.

# Rutland Showground



Showground Way, Oakham LE15 7TW

01572 757110

events@rutlandshowground.com

www.rutlandshowground.com

Miles from Oakham train station: **1**  
Miles from Stamford train station: **12.1**  
Miles from Peterborough train station: **25.6**

Number of conference rooms: **1**

Licensed for weddings: **Yes**

Disabled toilets: **Yes**

Ramp/lift: **No**

Disabled access: **Yes**

Perfect for  
outdoor  
events!

Rutland Showground is set in the beautiful Rutland countryside located on the bypass a mile from Oakham town centre and 8 miles from the A1. Home to the The Rutland Agricultural Society's annual County Show, the Rutland Showground is available to hire for both outdoor and indoor events. There is a conference boardroom for up to 12 delegates and the main pavilion can host meetings of up to 200 theatre style and 250 banquet style.

## Rutland Water Golf Course



Lodge Farm, Manton Rd, Oakham LE15 8HB

01572 737525

[enquiries@rutlandwatergolfcourse.co.uk](mailto:enquiries@rutlandwatergolfcourse.co.uk)

[www.rutlandwatergolfcourse.co.uk](http://www.rutlandwatergolfcourse.co.uk)

Miles from Oakham train station: **5.7**

Miles from Stamford train station: **9.2**

Miles from Peterborough train station: **21**

Number of conference rooms: **2**

Licensed for weddings: **Yes**

Disabled toilets: **Yes**

Ramp/lift: **Yes**

Disabled access: **Yes**



With the backdrop of Rutland Water, Rutland Water Golf Course's beautifully renovated stone barn Clubhouse boasts a private function room with balcony for intimate gatherings or their new purpose built marquee lined barn for your bigger events for up to 180 people.

## Rutland Water Nature Reserve



The Anglian Water Bird Watching Centre,  
Eggleton, LE15 8BT

01572 770651

[rutlandroombookings@anglianwater.co.uk](mailto:rutlandroombookings@anglianwater.co.uk)

Disabled toilets: **Yes**

Ramp/lift: **Yes**

Disabled access: **Yes**

Anglian Water Birdwatching Centre at Eggleton has a meeting room available. The setup of the room can be adapted to the needs of your event. The theatre-style layout is best suited for presentations and lectures seating up to 60 delegates. The boardroom style layout is best for a group meeting of up to 30 people.

Lyndon Visitor Centre, Lyndon Hill,  
LE15 8RN (Managed by Leicestershire &  
Rutland Wildlife Trust)

01572 737378

[info@lrwt.org.uk](mailto:info@lrwt.org.uk)

Disabled toilets: **Yes**

Disabled access: **Yes**

Lyndon Visitor Centre offers a range of events and workshops. Leicestershire & Rutland Wildlife Trust's Wild Wellbeing Days provide people with beautiful surroundings to get together. They also offer a range of courses including dry stone walling, bird ringing and much more!

Volunteer Training Centre, Oakham Road,  
near Hambleton, Oakham, Rutland, LE15 8TL

01572 720049

[volunteering@lrwt.org.uk](mailto:volunteering@lrwt.org.uk)

Disabled toilets: **Yes**

Disabled access: **Yes**

The Volunteer Training Centre has two spaces for corporate hire. The Training Room is located on the ground floor and seats up to 20 people. The Lagoon View Meeting Room can accommodate up to 20 people boardroom style.

Spanhoe Lodge



Laxton, Nr Corby. NN17 3AT

01780 450328

stay@spanhoelodge.co.uk

www.spanhoelodge.co.uk

Miles from Oakham train station: **12.1**  
Miles from Stamford train station: **11.2**  
Miles from Peterborough train station: **20.1**

Number of conference rooms: **2**

Licensed for weddings: **No**

Disabled toilets: **Yes**

Ramp/lift: **Ramps**

Disabled access: **Yes**

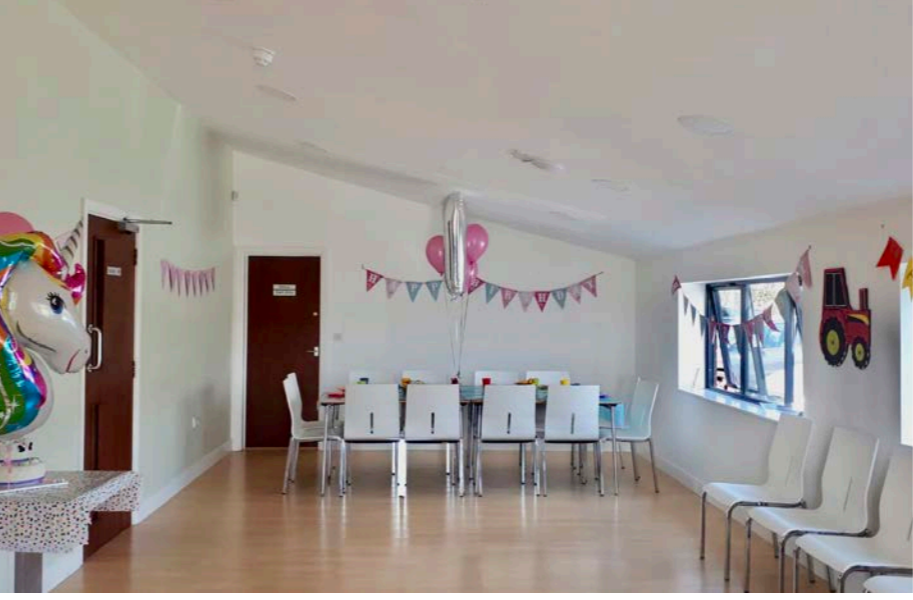


Spanhoe Lodge is a great place to meet and eat as well as sleep. They have an ideal and quiet location for your conference, seminar, board meeting, working breakfast, lunch or family event.

Whatever your requirements, they can tailor a package to suit your needs. They can also provide a wide range of food and beverage packages.

Capacity	Boardroom	Cabaret	U-Shaped
Dakota Room	42	28	24
Gallery Room	27	14	16

The Dairy Barn Café



Leesthorpe, Melton Mowbray, LE14 2XJ

01664 474461

info@ferneleys.co.uk

www.ferneleysicecream.co.uk

Miles from Oakham train station: **6.7**  
Miles from Stamford train station: **19.3**  
Miles from Peterborough train station: **32.3**

Number of conference rooms: **1**

Licensed for weddings: **Yes**

Disabled toilets: **Yes**

Ramp/lift: **N/A**

Disabled access: **Yes**

The function room at The Dairy Barn Café is available for hire for children's parties (with use of the polytunnel play barn), corporate meetings (with a projector and flip chart available), educational talks, family parties, baby showers, Christenings, Funeral Teas, etc.

There is also the opportunity to rent out part of their field for Weddings (POA).

Catering for meetings and events is also available.

Capacity	Function Room
Maximum Seated	18
Maximum Standing	25



# The Falcon Hotel



7 High Street East, Uppingham, Rutland,  
LE15 9PY

01572 823535

info@falcon-hotel.co.uk

www.falcon-hotel.co.uk

Miles from Oakham train station: **6.6**  
Miles from Stamford train station: **13.7**  
Miles from Peterborough train station: **22.7**

Number of conference rooms: **3**

Licensed for weddings: **Yes**

Disabled toilets: **Yes**

Ramp/lift: **Yes, at the back of the hotel into  
the main area**

Disabled access: **Yes**

The perfect setting for large or intimate functions or parties, all of The Falcon Hotel's event packages are bespoke to your needs. With a range of function rooms, including their bright and airy Garden Terrace, and cosy Oakroom, complete with original features.

Capacity	Seats up to
Garden Terrace	120
Oakroom	28
Club Room	15

## The Olive Branch



Main Street, Clipsham, Oakham, Rutland,  
LE15 7SH

01780 410 355

[info@theolivebranchpub.com](mailto:info@theolivebranchpub.com)

[www.theolivebranchpub.com](http://www.theolivebranchpub.com)

Miles from Oakham train station: **9.6**

Miles from Stamford train station: **11.2**

Miles from Peterborough train station: **23.4**

Number of conference rooms: **1**

Licensed for weddings: **No**

Disabled toilets: **Yes**

Ramp/lift: **No**

Disabled access: **Yes**

*Perfect  
for dinner  
parties!*

Located just a mile from the A1, The Barn at The Olive Branch is a great venue for business as well as pleasure, dinner parties, private meetings, a buffet lunch or a canapé party. With six bedrooms across the road at Beech House, it's also perfect if you and your guests want to make a night of it...



## The Victoria Hall



39b, 39 High St, Oakham LE15 6AH

01572 722496

[info@victoriahall.org](mailto:info@victoriahall.org)

[www.victoriahall.org](http://www.victoriahall.org)

Miles from Oakham train station: **0.3**

Miles from Stamford train station: **11.4**

Miles from Peterborough train station: **24.7**

Number of conference rooms: **2**

Licensed for weddings: **Yes**

Disabled toilets: **Yes**

Ramp/lift: **Ramp**

Disabled access: **Yes**



*Perfect  
for private  
parties!*

Victoria Hall lends itself to almost any type of event from small children's birthday parties to conferences for 200 delegates! The Victoria Hall is an ideal location to host wedding receptions, birthdays, anniversaries, engagements, reunions, lifestyle exhibitions, charity fund raisers, conferences and special events.

Tresillian Guest House



67 Dalby Road, Melton Mowbray,  
Leicestershire, LE13 0BQ

01664 481997

[www.tresillianhouse.com](http://www.tresillianhouse.com)

Miles from Oakham train station: **9.5**  
Miles from Stamford train station: **20.9**  
Miles from Peterborough train station: **34.4**

Number of conference rooms: **1**

Licensed for weddings: **No**

Disabled toilets: **Yes**

Ramp/lift: **Steep slope access to the log cabin**

Disabled access: **Yes**

Enjoy learning a new skill or hobby in an informal hands-on workshop! Develop your skills, confidence and knowledge and try new things. There is a huge variety of opportunities for you to explore including Willow Sculpture, Gardening, and designing and making your own jewellery.



Wisteria Hotel



Wisteria Hotel, 4 Catmos Street, Oakham,  
Rutland, LE15 6HW

01572 722844

[enquiries@wisteriahotel.co.uk](mailto:enquiries@wisteriahotel.co.uk)

[www.wisteriahotel.co.uk](http://www.wisteriahotel.co.uk)

Miles from Oakham train station: **0.8**  
Miles from Stamford train station: **11.2**  
Miles from Peterborough train station: **24.7**

Number of conference rooms: **5**

Licensed for weddings: **Yes**

Disabled toilets: **No**

Ramp/lift: **No**

Disabled access: **No**

The Wisteria Hotel has three private rooms available for weddings, events and meetings. All rooms benefit from natural daylight and the venue itself is located very close to Oakham train station meaning attendees will not have far to travel if they arrive by train.

Capacity	Theatre	Cabaret	Banqueting	Boardroom	U-Shaped
Barn Room	63	48	70	26	26
Barn Lounge	48	36	40	22	22
Georgian Suite 1,2 & 3	24 dependent on section		40	12 dependent on section	Flexible - can divide into 3 private rooms

